

## Hydraulic Crawler Crane

# CKE

# 900G

Model : CKE900G-3

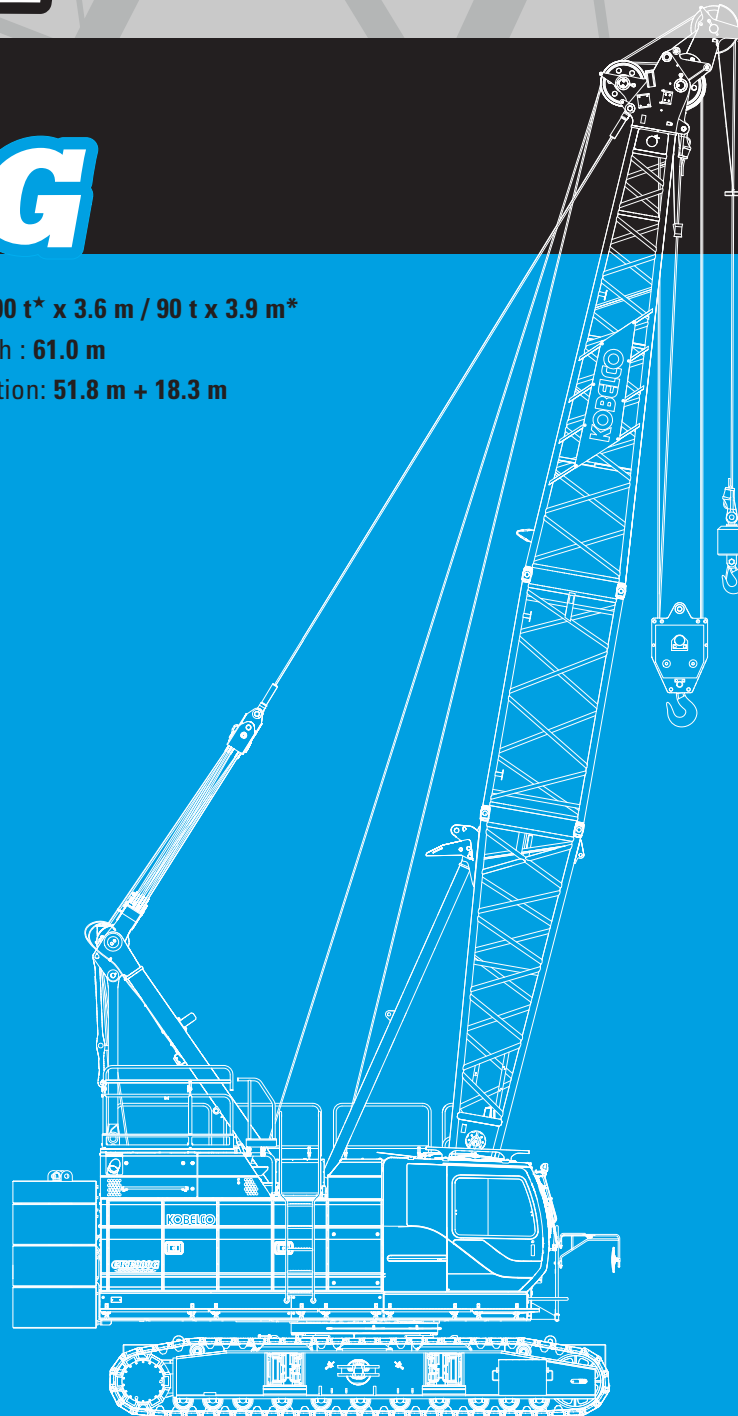
Max. Lifting Capacity: **100 t\* x 3.6 m / 90 t x 3.9 m\***

Max. Crane Boom Length : **61.0 m**

Max. Fixed Jib Combination: **51.8 m + 18.3 m**


\* The value are theoretical result.

\* Auxiliary sheave is necessary.



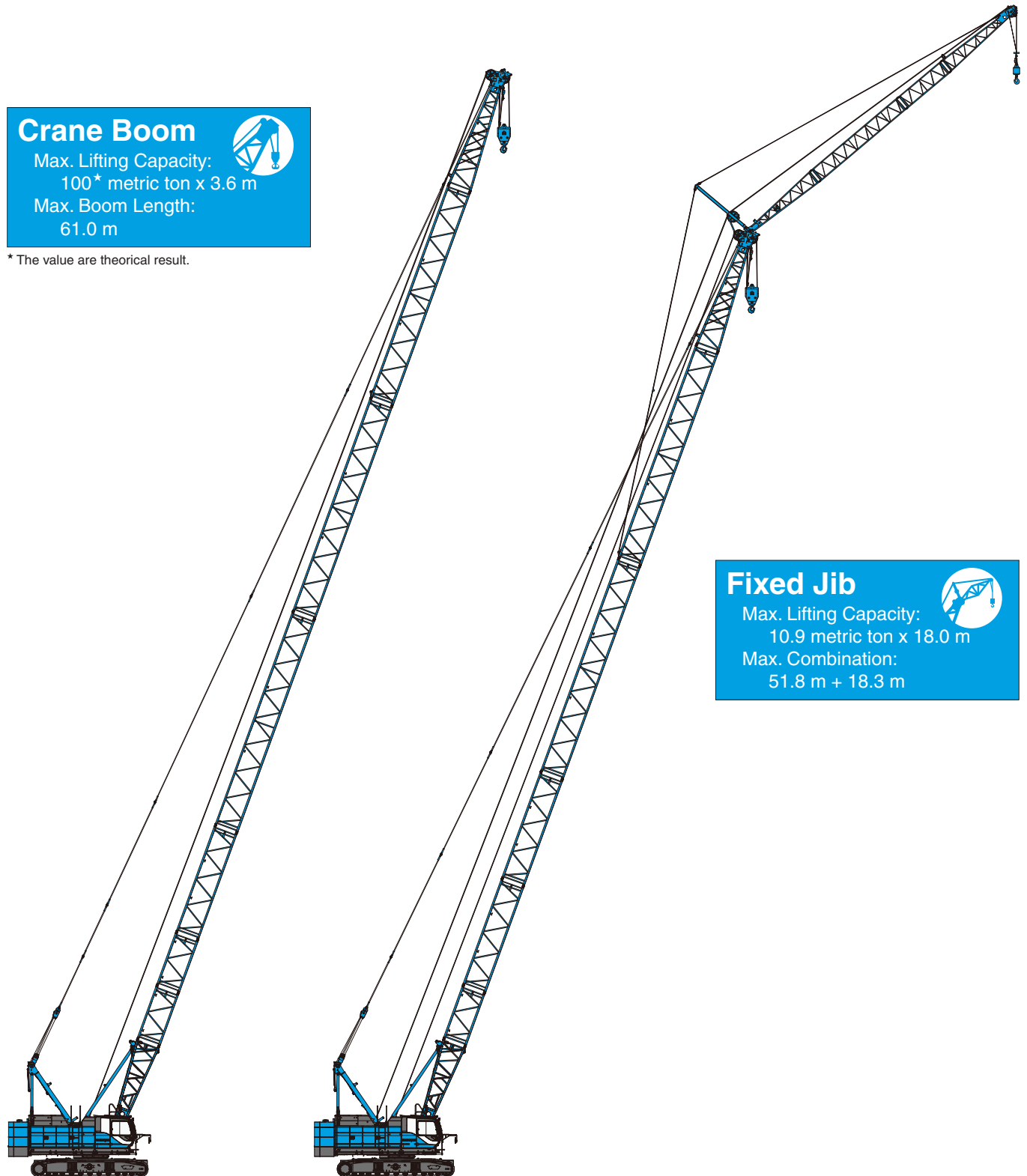
# KOBELCO


# CONFIGURATION

**Crane Boom** 

Max. Lifting Capacity:  
100\* metric ton x 3.6 m  
Max. Boom Length:  
61.0 m

\* The value are theoretical result.



**Fixed Jib** 

Max. Lifting Capacity:  
10.9 metric ton x 18.0 m  
Max. Combination:  
51.8 m + 18.3 m

# **CKE900G-3**

## **CONTENTS**

<b>1</b>	<b>CONFIGURATION</b>
<b>3</b>	<b>SPECIFICATIONS</b>
<b>5</b>	<b>GENERAL DIMENSIONS</b>
<b>6</b>	<b>BOOM AND JIB ARRANGEMENTS</b>
<b>7</b>	<b>WORKING RANGES</b>
<b>10</b>	<b>SUPPLEMENTAL DATA</b>
<b>11</b>	<b>LIFTING CAPACITIES</b>
<b>16</b>	<b>SUPPLEMENTAL DATA FOR CLAMSHELL</b>
<b>17</b>	<b>LIFTING CAPACITIES</b>
<b>18</b>	<b>SUPPLEMENTAL DATA FOR REDUCED WEIGHTS</b>
<b>19</b>	<b>LIFTING CAPACITIES</b>
<b>20</b>	<b>TRANSPORTATION PLAN</b>
<b>21</b>	<b>PARTS AND ATTACHMENTS</b>

# SPECIFICATIONS



## Power Plant

**Model:** HINO J08E-YD

**Type:** 4 cycle, water-cooled, vertical in-line 6, direct injection, turbo-charger, intercooled

**Displacement:** 7,684 liters

**Rated power:** 213 kW/2100 min<sup>-1</sup>

**Max. Torque:** 1,017 N·m/1,600 min<sup>-1</sup>

**Cooling System:** Water-cooled

**Starter:** 24V-5kW

**Radiator:** Corrugated type core, thermostatically controlled

**Air cleaner:** Dry type with replaceable paper element

**Throttle:** Twist grip type hand throttle, electrically actuated

**Fuel filter:** Replaceable paper element

**Batteries:** Two 12V x 136 Ah/5HR capacity batteries, series connected

**Fuel tank capacity:** 400 liters

**AdBlue® tank capacity:** 30 liters



## Hydraulic System

**Main pumps:** 3 variable displacement piston pumps

**Control:** Full-flow hydraulic control system for infinitely variable pressure to all winches, propel and swing. Controls respond instantly to the touch, delivering smooth function operation.

**Cooling:** Oil-to-air heat exchanger (plate-fin type)

**Filtration:** Full-flow and bypass type with replaceable element

**Max. relief valve pressure:**

**Load hoist, boom hoist and propel system:** 31.9 MPa

**Swing system:** 27.5 MPa

**Control system:** 5.4 MPa

**Hydraulic Tank Capacity:** 440 liters



## Boom Hoisting System

Powered by a hydraulic motor through a planetary reducer.

**Brake:** A spring-set, hydraulically released multiple-disc brake is mounted on the boom hoist motor and operated through a counter-balance valve.

**Drum Lock:** External ratchet for locking drum

**Drum:** Single drum, grooved for 16mm dia. wire rope

**Line Speed:** Single line on first drum layer

**Hoisting/Lowering:** 70 to 2 m/min

**Boom hoisting/lowering:** 16 mm x 150 m

**Boom guy line:** 30 mm

**Boom backstops:** Required for all boom length



## Load Hoisting System

Front and rear drums for load hoist powered by a hydraulic variable plunger motors, driven through planetary reducers.

**Negative Brake:** A spring-set, hydraulically released multiple-disc brake is mounted on the hoist motor and operated through a counter-balance valve. (Positive free fall brake is optional)

**Drum Lock:** External ratchet for locking drum

**Drums:**

**Front Drum:**

614 mm P.C.D x 617 mm wide drum, grooved for 26 mm wire rope. Rope capacity is 240 m working length and 360 m storage length.

**Rear Drum:** 614 mm P.C.D x 617 mm wide drum, grooved for 26 mm wire rope. Rope capacity is 165 m working length and 360 m storage length.

**Diameter of wire rope**

**Main winch:** 26 mm x 240 m

**Aux. winch:** 26 mm x 165 m

**Third winch:** 22 mm x 145 m

**Line Speed\*:**

**Hoisting/lowering:** 120 to 3 m/min

**Line Pull:**

**Max. Line Pull\*:** 208 kN {21.2 ft}  
(Referential performance)

**Rated Line Pull:** 112 kN {11.4 ft}

\*Single line on first drum layer



## Swing System

Swing unit is powered by hydraulic motor driving spur gears through planetary reducers, the swing system provides 360° rotation.

**Swing parking brakes:** A spring-set, hydraulically released multiple-disc brake is mounted on swing motor.

**Swing circle:** Single-row ball bearing with an integral internally cut swing gear.

**Swing lock:** Manually, four position lock for transportation

**Swing Speed:** 4.0 min<sup>-1</sup>



## Upper Structure

Torsion-free precision machined upper frame. All components are located clearly and service friendly. Engine will with low noise level.

**Counter weight:** 31.9 ton



## Cab & Control

Totally enclosed, full vision cab with safety glass, fully adjustable, high backed seat with a headrest and armrests, and intermittent wiper and window washer (skylight and front window).

**Cab fittings:**

Air conditioner, convenient compartment (for tool), cup holder, cigarette lighter, sun visor, roof blind, tinted glass, floor mat, footrest, and shoe tray



## Lower Structure

Steel-welded carbody with axles. Crawler assemblies can be hydraulically extended for wide-track operation or retracted for transportation. Crawler belt tension is maintained by hydraulic jack force on the track-adjusting bearing block.

**Carbodyweight:** 14.4 ton

**Crawler drive:** Independent hydraulic propel drive is built into each crawler side frame. Each drive consists of a hydraulic motor propelling a driving tumbler through a planetary gear box. Hydraulic motor and gear box are built into the crawler side frame within the shoe width.

**Crawler brakes:** Spring-set, hydraulically released parking brakes are built into each propel drive.

**Steering mechanism:** A hydraulic propel system provides both skid steering (driving one track only) and counter-rotating steering (driving each track in opposite directions).

**Track rollers:** Sealed track rollers for maintenance-free operation.

**Shoe (flat):** 800 mm wide each crawler

**Max. gradeability:** 40%



## Weight

Including upper and lower machine, 31.9 ton counterweight and 14.4 ton carbody weight, basic boom (or basic boom + basic jib), hook, and other accessories.

**Weight:** 90.0 ton

**Ground pressure:** 101 kPa



## Attachment

### Boom & Jib:

Welded lattice construction using tubular, high-tensile steel chords with pin connection between sections.

### Boom and Jib length

	Min. Length (Min. combination)	Max. Length (Max. combination)
Crane Boom	12.2 m	61.0 m
Fixed Jib	24.4 m + 9.1 m	51.8 m + 18.3 m

## Main Specifications (Model: CKE900G-3)

Crane Boom	
Max. Lifting Capacity	100 t * x 3.6 m / 90 t x 3.9 m * <sup>3</sup>
Max. Length	61.0 m
Fixed Jib	
Max. Lifting Capacity	10.9 t x 18.0 m
Max. Combination	51.8 m + 18.3 m
Main & Aux. Winch	
Max. Line Speed (1st layer)	120 m/min
Rated Line Pull (Single line)	112 kN {11.4 tf}
Wire Rope Diameter	26 mm
Wire Rope Length	240 m (Main), 165 m (Aux)
Brake Type (Free fall)	Wet-type multiple disc brake (Optional)
Working Speed	
Swing Speed	4.0 min <sup>-1</sup> {rpm}
Travel Speed	1.7/1.1 km/h
Power Plant	
Model	HINO J08E-YD
Engine Output	213 kW/2100min <sup>-1</sup>
Fuel Tank	400 liters
AdBlue® Tank	30 liters

### Hydraulic System

Main Pumps	3 variable displacement
Max. Pressure	31.9 Mpa {325 kg/cm <sup>2</sup> }
Hydraulic Tank Capacity	440 liters

### Self-Removal Device

	Counterweight/self-removal device (option)
--	--

### Weight

Operating Weight	90.0 t * <sup>1</sup>
Ground Pressure	101 kPa
Counterweight	31,900 kg
Transport Weight	41,350 kg * <sup>2</sup>

Units are SI units. { } indicates conventional units.

Line speeds in table are for light loads. Line speed varies with load.

\*<sup>1</sup> Including upper and lower machine, 31.9 ton counterweight, 14.4 ton carbody weight, basic boom, hook, and other accessories.

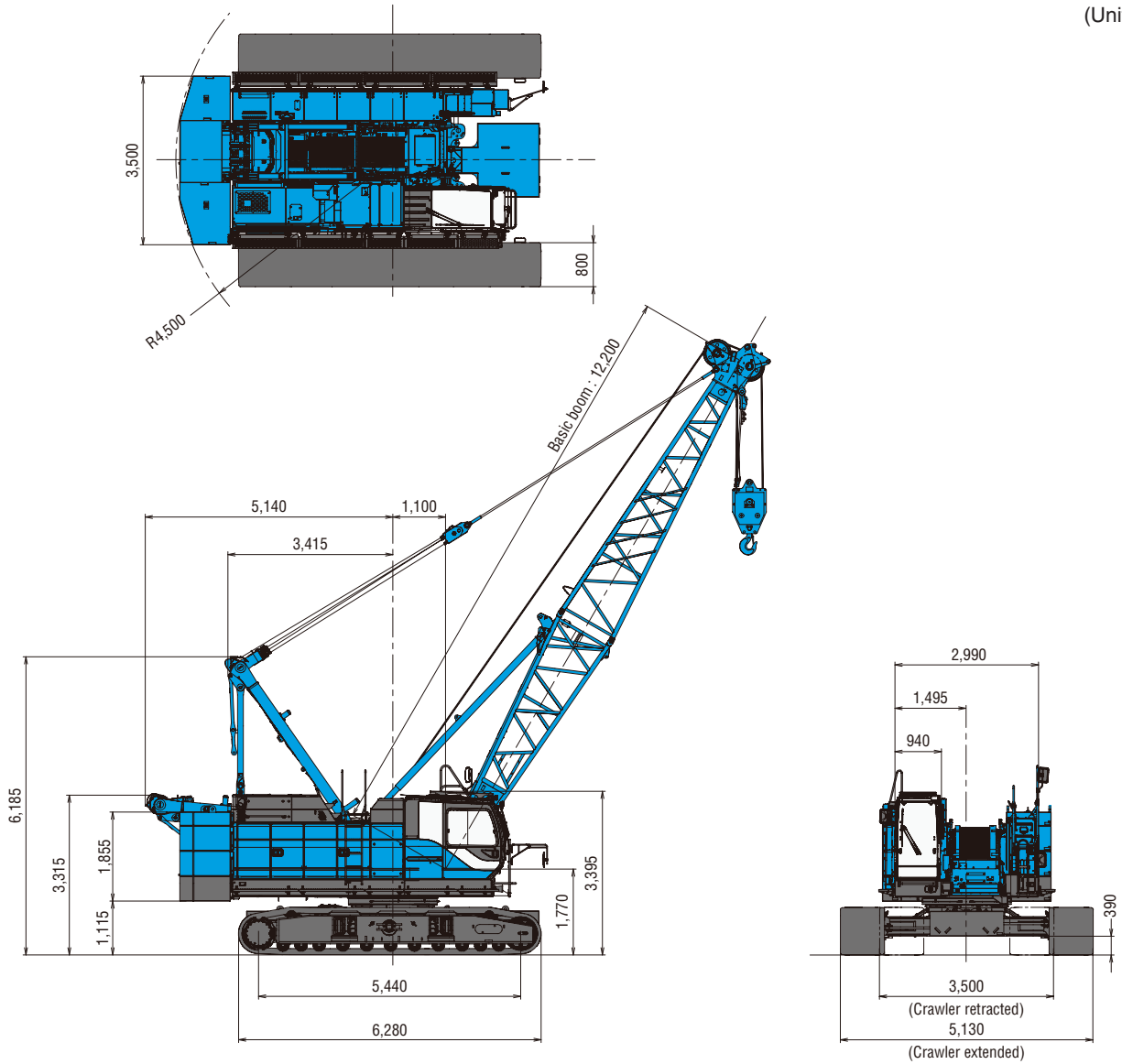
\*<sup>2</sup> Base machine with boom base, gantry, crawlers, and wire ropes (front/rear/boom hoist)

\*<sup>3</sup> Auxiliary sheave is must.

\* The value are theoretical result.

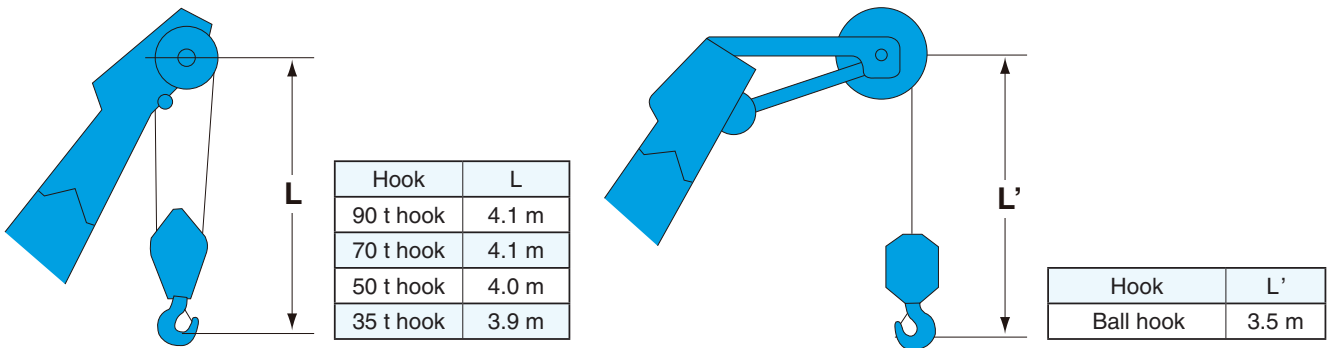
# GENERAL DIMENSIONS

(Unit: mm)



This catalog may contain photographs of machines with specifications, attachments and optional equipment.

## Limit of Hook Lifting



# BOOM AND JIB ARRANGEMENTS

## Crane Boom Arrangements

Boom length m (ft)	Boom arrangement
12.2 (40)	
15.2 (50)	※
18.3 (60)	※
21.3 (70)	※
24.4 (80)	※
27.4 (90)	※
30.5 (100)	※
33.5 (110)	※
36.6 (120)	※
39.6 (130)	※

Boom length m (ft)	Boom arrangement
42.7 (140)	※
45.7 (150)	※
48.8 (160)	※
51.8 (170)	※
54.9 (180)	※
57.9 (190)	※
61.0 (200)	※

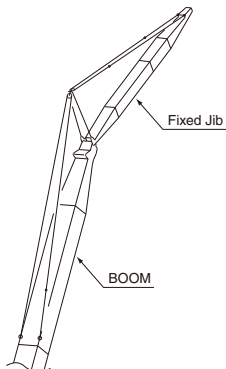
Symbol	Boom Length	Remarks
	5.8 m	Boom Base
	6.4 m	Boom Top
	3.0 m	Insert Boom
	6.1 m	Insert Boom
	12.2 m	Insert Boom
	12.2 m	Insert Boom with lug

↙ mark shows the boom insert with lug attached and the guy line installing position when the fixed jib is used.

※ mark shows the standard boom arrangement which make the boom arrangement of less than the each boom length possible.

○ mark shows the installing of the cable roller for the insert boom.

## Fixed Jib Arrangements

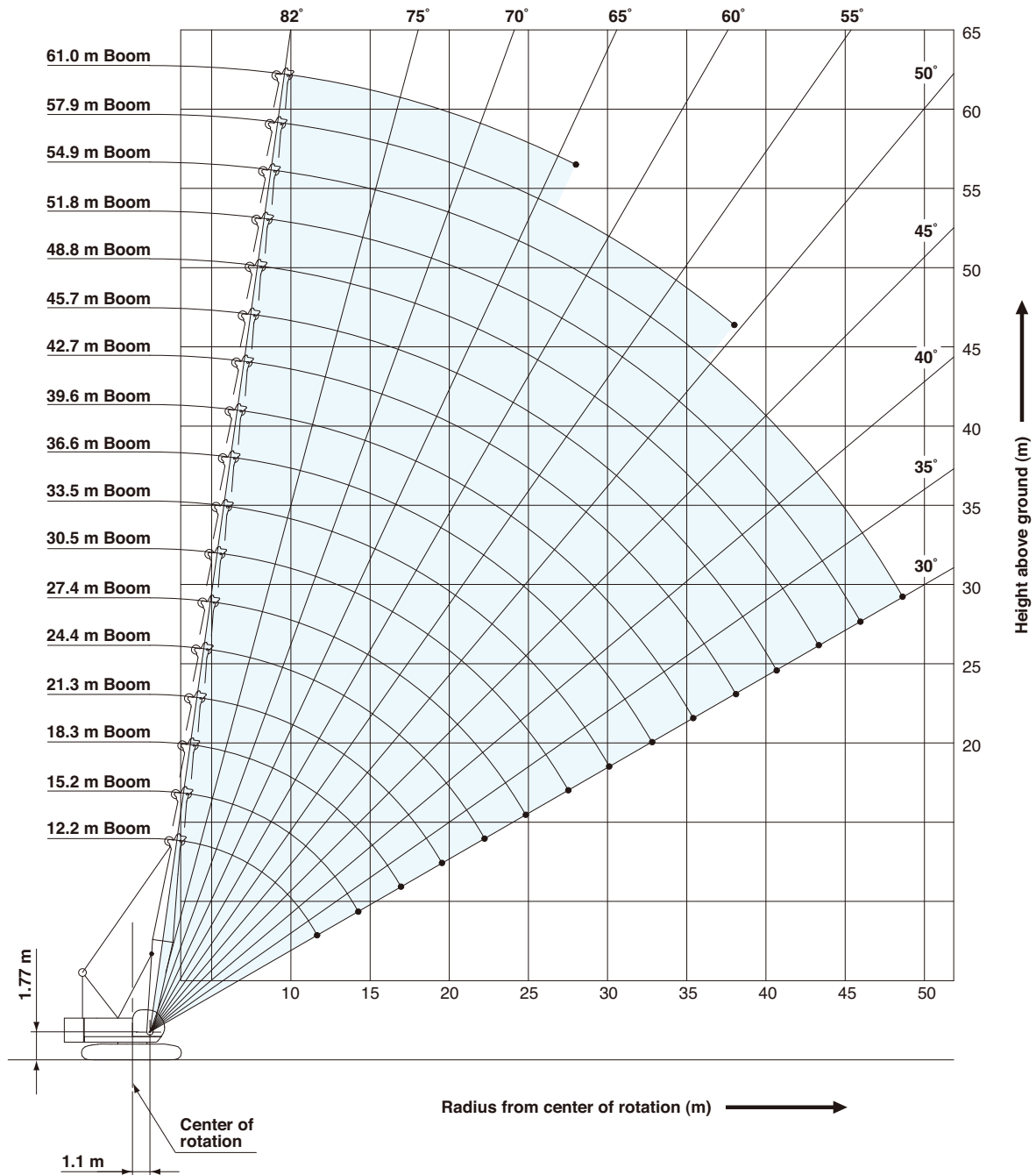


Crane boom length	Jib length m (ft)	Jib arrangement
24.4 m ~ 51.8 m	9.1 (30)	
	12.2 (40)	
	15.2 (50)	
	18.3 (60)	

Symbol	Jib Length	Remarks
	4.6 m	Jib Base
	4.6 m	Jib Top
	3.0 m	Insert Jib
	6.1 m	Insert Jib

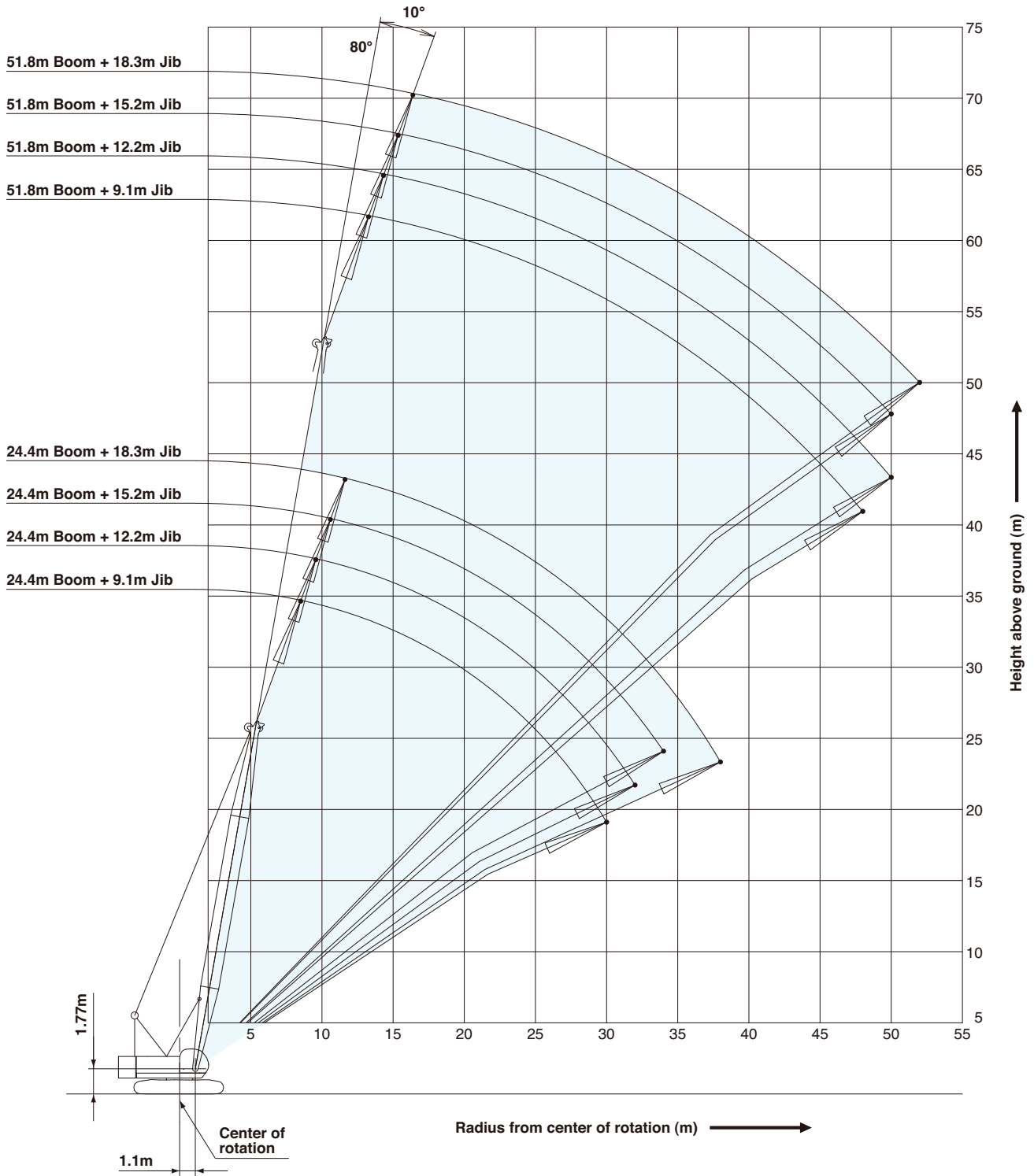
# WORKING RANGES

## Crane Boom



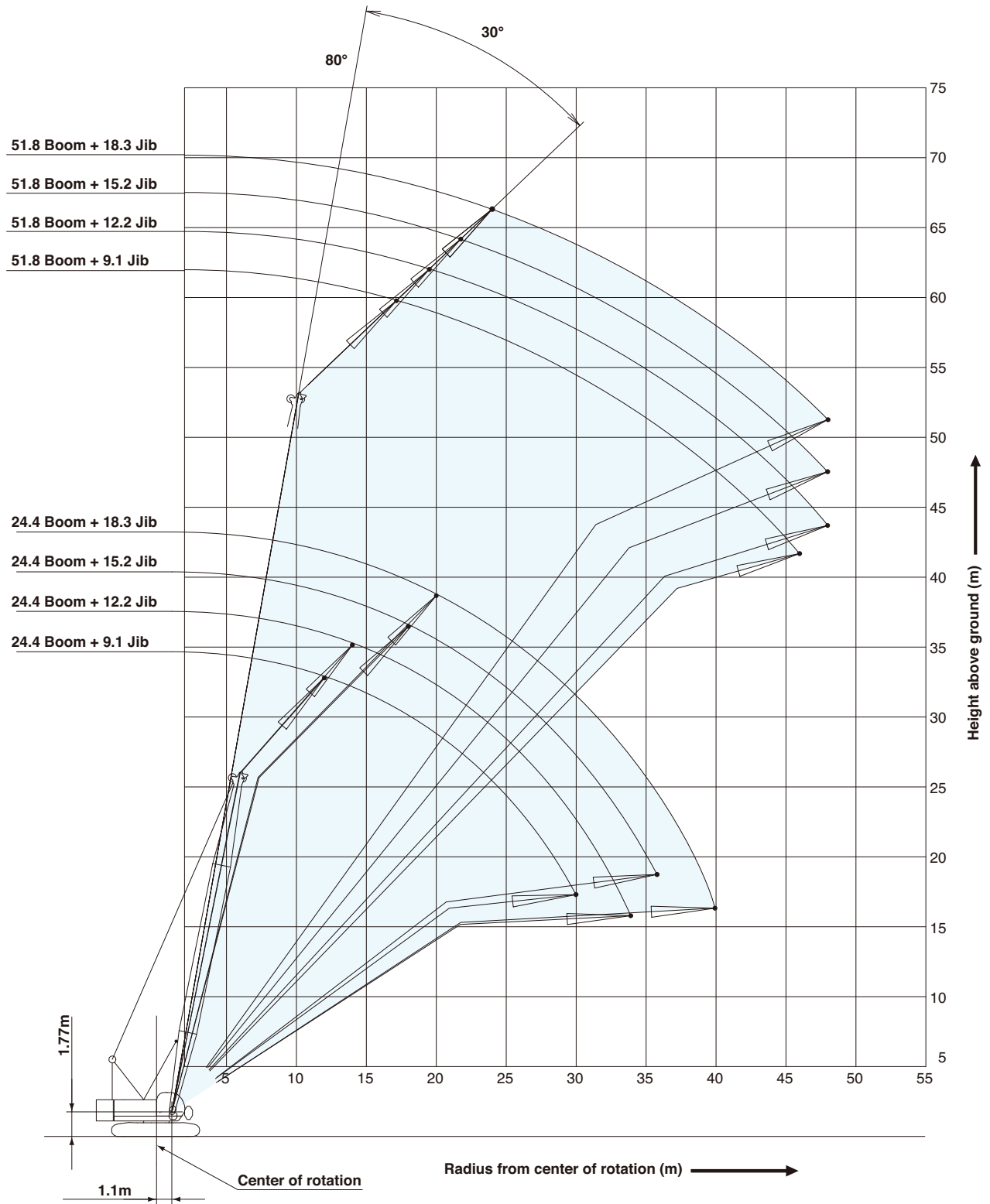


# Fixed Jib 10°



# WORKING RANGES

## Fixed Jib 30°



# SUPPLEMENTAL DATA

- Ratings are calculated to comply with EN13000, ISO 4305 and include factors based on a 4 degree tipping angle.
- Operating radius is the horizontal distance from centerline of rotation to a vertical line through the center of gravity of the load.
- The weight of hook block, slings and all other load handling accessories shall be considered part of the lifted load.
- Ratings shown are based on freely suspended loads and make no allowance for such factors as wind effect on lifted load, ground conditions, out-of-level, operating speeds or any other condition that could be detrimental to the safe operation of this equipment.  
The operator, therefore, has the responsibility to judge the existing conditions and reduce lifted loads and operating speeds accordingly.
- Ratings are for the operation on a firm and level surface, up to 1 % gradient.
- At radii and boom lengths where no ratings are shown on chart, operation is not intended nor approved.
- Boom inserts and guy lines must be arranged as shown in the "operator's manual".
- Boom hoist reeving is 12 parts of line.
- Gantry must be in raised position for all conditions.
- Boom backstops are required for all boom lengths.
- The boom should be erected over the front of the crawlers, not laterally.  
When erecting and lowering the boom at length of 190 ft (57.9 m) with jib, the blocks for erection must be placed at the end of the crawlers.
- Ratings inside of boxes  are based on structural competence.
- The minimum rated load is 1.4 t.
- Crawlers must be fully extended for all crane operations.
- Ratings shown are based on allowable wind speed of 9.8 m/s or less.  
The wind speed mentioned here means the instantaneous wind speed.
- Ratings shown are based on allowable travel speed of 0.1 m/s or less.

## (Crane boom lifting)

- The total load that can be lifted is the value of the weight of main hook block, slings, and all other load handling accessories deducted from crane boom ratings shown.

## (Fixed jib lifting)

- The total load that can be lifted is the value of the weight of jib hook block, slings, and all other load handling accessories deducted from fixed jib ratings shown.
- The availability of fixed jib mounting  
- On crane boom : Range 24.4 m to 51.8 m.

## <Reference Information>

### Main hoist loads

No. of Parts of Line	1	2	3	4	5
Maximum Loads (kN)	112	224	335	447	559
Maximum Loads (t)	11.4	22.8	34.2	45.6	57.0

No. of Parts of Line	6	7*	8*
Maximum Loads (kN)	671	779	883
Maximum Loads (t)	68.4	79.4	90.0

\*Use auxiliary sheave.

### Auxiliary hoist loads

No. of Parts of Line	1
Maximum Loads (kN)	108
Maximum Loads (t)	11.0

Weight of hook block					
Hook Block	90 t	70 t	50 t	35 t	Ball Hook
Weight (t)	1.3	0.9	0.85	0.7	0.3

Operation of this equipment in excess of rated loads or disregard of instruction voids the warranty.

## Assembling the counterweight (Standard type)

31.9 ton counterweight  
14.4 ton carbody weight

No.4		No.5
No.3		
No.2		
No.1		

Counterweights



Carbody weights

## Assembling the counterweight (Optional type)

(Equipped with self removal device)

31.3 ton counterweight  
14.4 ton carbody weight

No.4		No.5
No.2		No.3
No.1		

Counterweights



Carbody weights

- Although the total weight of the counterweight is different between machine equipped with self-removal device and machine not equipped with self-removal device, the lifting capacity is the same.

# LIFTING CAPACITIES



## Crane Boom Lifting Capacities

Counterweight: 31.9 t  
Carbody Weight: 14.4 t

Unit: metric ton

Working radius (m) \ Boom Length (m)	12.2	15.2	18.3	21.3	24.4	27.4	30.5	33.5	36.6	39.6	Boom Length (m) \ Working radius (m)
3.6	100.0*										3.6
3.9	90.0	89.9	89.7								3.9
4.0	89.0	88.9	88.7	4.3m/68.4							4.0
4.5	79.6	79.5	79.4	68.4	4.7m/68.4						4.5
5.0	72.1	71.9	71.8	68.4	67.6	5.1m/57.0					5.0
5.5	65.8	65.7	65.5	63.6	60.6	57.0	5.6m/54.0				5.5
6.0	60.5	60.3	59.9	57.5	54.9	52.7	50.5	45.6	6.4m/41.9	6.8m/34.2	6.0
7.0	48.6	48.5	48.4	48.1	46.2	44.5	42.9	41.5	40.0	34.2	7.0
8.0	39.9	39.8	39.7	39.9	39.8	38.5	37.2	36.1	35.0	33.9	8.0
9.0	33.8	33.7	33.6	33.8	33.6	33.6	32.8	31.9	31.0	30.1	9.0
10.0	29.3	29.2	29.1	29.2	29.1	29.0	28.9	28.5	27.7	27.0	10.0
12.0	11.8m/22.9	22.9	22.8	22.9	22.8	22.7	22.6	22.6	22.5	22.3	12.0
14.0		18.8	18.6	18.8	18.6	18.5	18.4	18.4	18.3	18.3	14.0
16.0		14.4m/18.1	15.7	15.8	15.7	15.6	15.5	15.4	15.3	15.3	16.0
18.0			17.0m/14.5	13.7	13.5	13.4	13.3	13.2	13.1	13.1	18.0
20.0				19.6m/12.2	11.8	11.7	11.6	11.5	11.4	11.4	20.0
22.0					10.5	10.4	10.2	10.2	10.0	10.0	22.0
24.0					22.3m/10.3	9.3	9.1	9.1	8.9	8.9	24.0
26.0						24.9m/8.8	8.2	8.2	8.0	8.0	26.0
28.0							27.6m/7.6	7.4	7.2	7.2	28.0
30.0								6.8	6.6	6.5	30.0
32.0								30.2m/6.7	6.0	6.0	32.0
34.0									32.9m/5.8	5.5	34.0
36.0										35.5m/5.1	36.0
Reeves	8	8	8	6	6	5	5	4	4	3	Reeves

Working radius (m) \ Boom Length (m)	42.7	45.7	48.8	51.8	54.9	57.9	61.0	Boom Length (m) \ Working radius (m)
7.0	7.3m/31.9	7.7m/28.0						7.0
8.0	31.4	27.8	8.1m/22.1	8.5m/19.2				8.0
9.0	29.2	26.2	20.8	18.6	16.2	9.4m/13.9	9.8m/11.8	9.0
10.0	26.2	24.5	19.5	17.4	15.2	13.4	11.7	10.0
12.0	21.7	21.2	17.3	15.4	13.3	11.7	10.2	12.0
14.0	18.1	18.0	15.5	13.8	11.9	10.4	9.0	14.0
16.0	15.2	15.1	14.1	12.4	10.7	9.3	8.0	16.0
18.0	12.9	12.9	12.8	11.4	9.7	8.4	7.2	18.0
20.0	11.2	11.2	11.1	10.4	8.9	7.6	6.5	20.0
22.0	9.9	9.8	9.8	9.6	8.1	7.0	5.9	22.0
24.0	8.7	8.7	8.6	8.5	7.5	6.4	5.4	24.0
26.0	7.8	7.7	7.7	7.6	6.9	5.9	4.9	26.0
28.0	7.0	7.0	6.9	6.8	6.4	5.4	4.5	28.0
30.0	6.4	6.3	6.3	6.1	6.0	5.0	4.1	30.0
32.0	5.8	5.7	5.7	5.6	5.4	4.6	3.8	32.0
34.0	5.3	5.2	5.1	5.0	4.9	4.3	3.4	34.0
36.0	4.8	4.8	4.7	4.6	4.4	4.0	3.2	36.0
38.0	4.4	4.4	4.2	4.1	4.0	3.6	2.9	38.0
40.0	38.1m/4.4	4.0	3.9	3.8	3.6	3.3	2.6	40.0
44.0		40.8m/3.9	43.4m/3.3	3.1	3.0	2.8	2.1	44.0
48.0				46.1m/2.8	2.5	2.2	1.7	48.0
52.0					48.7m/2.4	51.4m/1.8		52.0
Reeves	3	3	2	2	2	2	2	Reeves

Note:

Ratings according to EN13000.

Ratings shown in   are determined by the strength of the boom or other structural components.

Lifting capacities may vary depending on hook used or with/without auxiliary sheave.

Please refer rated chart in operator's cabin.

\* The value are theoretical result.



# Fixed Jib Lifting Capacities (Without Main Hook Block) (Jib Offset Angle : 10°)

Counterweight: 31.9 t  
Carbody Weight: 14.4 t

Unit: metric ton

Boom length (m)		24.4				27.4				30.5				Boom length (m)
Jib length (m)		9.1	12.2	15.2	18.3	9.1	12.2	15.2	18.3	9.1	12.2	15.2	18.3	Jib length (m)
Working radius (m)	9.0	10.9												9.0
	10.0	10.9				10.9				10.9				10.0
	12.0	10.9	10.9	9.0		10.9	10.9	9.0		10.9	10.9			12.0
	14.0	10.9	10.9	9.0	8.1	10.9	10.9	9.0	8.1	10.9	10.9	9.0	8.1	14.0
	16.0	10.9	10.5	8.7	7.7	10.9	10.9	9.0	7.9	10.9	10.9	9.0	8.1	16.0
	18.0	10.9	9.5	7.8	6.8	10.9	10.2	8.3	7.2	10.9	10.6	8.7	7.5	18.0
	20.0	10.3	8.6	7.1	6.2	10.2	9.2	7.5	6.5	10.1	9.7	7.9	6.8	20.0
	22.0	9.0	7.8	6.5	5.6	8.9	8.4	6.9	5.9	8.8	8.9	7.2	6.2	22.0
	24.0	8.0	7.2	5.9	5.1	7.9	7.7	6.3	5.4	7.8	8.0	6.6	5.7	24.0
	26.0	7.2	6.7	5.5	4.7	7.1	7.1	5.8	5.0	7.0	7.1	6.2	5.3	26.0
	28.0	6.5	6.2	5.1	4.4	6.4	6.5	5.4	4.6	6.3	6.4	5.7	4.9	28.0
	30.0	5.9	5.8	4.8	4.1	5.8	5.9	5.1	4.3	5.7	5.8	5.4	4.6	30.0
	32.0		5.5	4.5	3.8	5.3	5.4	4.8	4.1	5.2	5.3	5.1	4.3	32.0
	34.0			4.2	3.6		4.9	4.5	3.8	4.7	4.8	4.8	4.0	34.0
	36.0				3.4			4.3	3.6		4.4	4.5	3.8	36.0
	38.0				3.2			4.1	3.4		4.0	4.1	3.6	38.0
	40.0								3.2			3.8	3.4	40.0
	42.0												3.3	42.0
44.0												3.1	44.0	
Reeves	1	1	1	1	1	1	1	1	1	1	1	1	Reeves	

Boom length (m)		33.5				36.6				39.6				Boom length (m)
Jib length (m)		9.1	12.2	15.2	18.3	9.1	12.2	15.2	18.3	9.1	12.2	15.2	18.3	Jib length (m)
Working radius (m)	12.0	10.9	10.9			10.9				10.9				12.0
	14.0	10.9	10.9	9.0	8.1	10.9	10.9	9.0		10.9	10.9	9.0		14.0
	16.0	10.9	10.9	9.0	8.1	10.9	10.9	9.0	8.1	10.9	10.9	9.0	8.1	16.0
	18.0	10.9	10.9	9.0	7.8	10.9	10.9	9.0	8.1	10.9	10.9	9.0	8.1	18.0
	20.0	10.0	10.1	8.3	7.1	9.9	10.0	8.6	7.4	9.8	9.9	9.0	7.7	20.0
	22.0	8.7	8.8	7.6	6.5	8.6	8.7	8.0	6.8	8.5	8.6	8.2	7.0	22.0
	24.0	7.8	7.8	7.0	6.0	7.5	7.7	7.3	6.2	7.4	7.6	7.7	6.5	24.0
	26.0	7.0	7.0	6.5	5.5	6.7	6.9	6.8	5.8	6.6	6.8	6.9	6.0	26.0
	28.0	6.2	6.3	6.0	5.1	6.1	6.2	6.2	5.4	6.0	6.1	6.1	5.6	28.0
	30.0	5.6	5.7	5.6	4.8	5.5	5.5	5.7	5.0	5.4	5.4	5.6	5.2	30.0
	32.0	5.1	5.2	5.2	4.5	5.0	5.0	5.1	4.7	4.8	4.9	5.0	4.9	32.0
	34.0	4.7	4.7	4.8	4.2	4.5	4.6	4.7	4.4	4.4	4.5	4.5	4.6	34.0
	36.0	4.2	4.3	4.4	4.0	4.1	4.2	4.2	4.2	4.0	4.1	4.1	4.2	36.0
	38.0	3.9	4.0	4.0	3.8	3.8	3.8	3.9	3.9	3.7	3.7	3.8	3.8	38.0
	40.0		3.7	3.7	3.6	3.4	3.5	3.6	3.6	3.3	3.4	3.4	3.5	40.0
	42.0			3.4	3.4		3.2	3.3	3.3	3.0	3.1	3.2	3.2	42.0
	44.0				3.2			3.0	3.1		2.7	2.9	2.9	44.0
	46.0								2.8			2.6	2.7	46.0
48.0								2.4			2.2	2.4	48.0	
50.0												2.1	50.0	
Reeves	1	1	1	1	1	1	1	1	1	1	1	1	Reeves	

Note:

Ratings according to EN13000.

Ratings shown in   are determined by the strength of the boom or other structural components.

Lifting capacities may vary depending on hook used or with/without auxiliary sheave.

Please refer rated chart in operator's cabin.

# LIFTING CAPACITIES



## Fixed Jib Lifting Capacities (Without Main Hook Block) (Jib Offset Angle : 10°)

Counterweight: 31.9 t  
Carbody Weight: 14.4 t

Unit: metric ton

Boom length (m)		42.7				45.7				48.8				Boom length (m)
Jib length (m)		9.1	12.2	15.2	18.3	9.1	12.2	15.2	18.3	9.1	12.2	15.2	18.3	Jib length (m)
Working radius (m)	14.0	10.9	10.9			10.9	10.9			10.9				14.0
	16.0	10.9	10.9	9.0		10.9	10.9	9.0		10.9	10.9			16.0
	18.0	10.9	10.9	9.0	8.1	10.8	10.9	9.0	8.1	10.8	10.9	9.0	8.1	18.0
	20.0	9.6	9.8	9.0	7.9	9.5	9.6	9.0	8.1	9.5	9.6	9.0	8.1	20.0
	22.0	8.4	8.5	8.5	7.3	8.3	8.4	8.5	7.6	8.2	8.4	8.5	7.8	22.0
	24.0	7.3	7.5	7.6	6.7	7.2	7.4	7.5	7.0	7.2	7.3	7.4	7.2	24.0
	26.0	6.5	6.7	6.7	6.3	6.4	6.5	6.7	6.5	6.3	6.5	6.6	6.7	26.0
	28.0	5.8	5.9	6.0	5.8	5.7	5.8	5.9	6.0	5.7	5.8	5.9	5.9	28.0
	30.0	5.2	5.3	5.4	5.4	5.1	5.2	5.3	5.4	5.1	5.2	5.2	5.3	30.0
	32.0	4.7	4.8	4.9	4.9	4.6	4.7	4.8	4.8	4.6	4.6	4.7	4.8	32.0
	34.0	4.3	4.3	4.4	4.5	4.2	4.2	4.3	4.4	4.1	4.2	4.3	4.3	34.0
	36.0	3.8	3.9	4.0	4.0	3.7	3.8	3.9	3.9	3.7	3.8	3.8	3.9	36.0
	38.0	3.5	3.6	3.6	3.7	3.5	3.5	3.5	3.6	3.4	3.4	3.5	3.5	38.0
	40.0	3.2	3.3	3.3	3.3	3.1	3.2	3.2	3.3	3.0	3.1	3.2	3.2	40.0
	42.0	2.9	3.0	3.0	3.1	2.8	2.9	2.9	3.0	2.8	2.8	2.9	2.9	42.0
	44.0	2.5	2.7	2.8	2.8	2.5	2.6	2.7	2.7	2.5	2.5	2.6	2.6	44.0
	46.0	2.2	2.3	2.5	2.6	2.2	2.3	2.4	2.5	2.2	2.2	2.4	2.4	46.0
48.0		2.0	2.2	2.3	1.8	2.0	2.1	2.2	1.8	1.9	2.1	2.1	48.0	
50.0			1.9	2.0		1.7	1.8	1.9	1.4	1.6	1.8	1.9	50.0	
52.0				1.7			1.6	1.7			1.5	1.6	52.0	
Reeves	1	1	1	1	1	1	1	1	1	1	1	1	Reeves	

Boom length (m)		51.8			
Jib length (m)		9.1	12.2	15.2	18.3
Working radius (m)	14.0	10.9			
	16.0	10.9	10.9		
	18.0	10.7	10.8	9.0	8.1
	20.0	9.4	9.5	9.0	8.1
	22.0	8.1	8.3	8.3	8.0
	24.0	7.1	7.2	7.3	7.4
	26.0	6.2	6.4	6.5	6.6
	28.0	5.6	5.7	5.8	5.8
	30.0	5.0	5.1	5.1	5.2
	32.0	4.4	4.5	4.6	4.7
	34.0	4.0	4.1	4.2	4.2
	36.0	3.6	3.6	3.7	3.8
	38.0	3.3	3.3	3.4	3.4
	40.0	2.9	3.0	3.0	3.1
	42.0	2.7	2.7	2.8	2.8
	44.0	2.3	2.4	2.5	2.5
	46.0	2.1	2.1	2.2	2.3
48.0	1.7	1.8	1.9	2.0	
50.0		1.5	1.6	1.7	
52.0				1.5	
Reeves	1	1	1	1	

Note:

Ratings according to EN13000.

Ratings shown in  are determined by the strength of the boom or other structural components.

Lifting capacities may vary depending on hook used or with/without auxiliary sheave.

Please refer rated chart in operator's cabin.



# Fixed Jib Lifting Capacities (Without Main Hook Block) (Jib Offset Angle : 30°)

Counterweight: 31.9 t  
Carbody Weight: 14.4 t

Unit: metric ton

Boom length (m)		24.4				27.4				30.5				Boom length (m)
Jib length (m)		9.1	12.2	15.2	18.3	9.1	12.2	15.2	18.3	9.1	12.2	15.2	18.3	Jib length (m)
Working radius (m)	12.0	9.5												12.0
	14.0	9.3	6.9			9.4				9.5				14.0
	16.0	8.6	6.4			8.9	6.5			9.0	6.7			16.0
	18.0	8.0	5.9	4.8		8.3	6.1	4.9		8.6	6.2	5.0		18.0
	20.0	7.5	5.6	4.5	3.8	7.8	5.7	4.6	3.9	8.0	5.9	4.7	3.9	20.0
	22.0	7.1	5.3	4.2	3.6	7.4	5.4	4.3	3.6	7.6	5.6	4.4	3.7	22.0
	24.0	6.8	5.0	4.0	3.4	7.0	5.1	4.1	3.4	7.3	5.3	4.2	3.5	24.0
	26.0	6.5	4.8	3.8	3.2	6.7	4.9	3.9	3.2	7.0	5.1	4.0	3.3	26.0
	28.0	6.3	4.6	3.6	3.0	6.4	4.7	3.7	3.0	6.4	4.9	3.8	3.1	28.0
	30.0	6.1	4.4	3.5	2.9	6.2	4.5	3.6	2.9	5.8	4.7	3.7	3.0	30.0
	32.0		4.3	3.4	2.8	5.6	4.3	3.5	2.8	5.2	4.5	3.6	2.9	32.0
	34.0		4.2	3.3	2.7	5.1	4.2	3.4	2.7	4.7	4.4	3.5	2.8	34.0
	36.0			3.2	2.6		4.1	3.3	2.6	4.2	4.3	3.4	2.7	36.0
	38.0				2.5			3.2	2.5		4.2	3.3	2.6	38.0
	40.0				2.4			3.1	2.4			3.2	2.5	40.0
	42.0								2.3			3.1	2.4	42.0
	44.0												2.3	44.0
46.0												2.2	46.0	
Reeves	1	1	1	1	1	1	1	1	1	1	1	1	Reeves	

Boom length (m)		33.5				36.6				39.6				Boom length (m)
Jib length (m)		9.1	12.2	15.2	18.3	9.1	12.2	15.2	18.3	9.1	12.2	15.2	18.3	Jib length (m)
Working radius (m)	14.0	9.5				9.5								14.0
	16.0	9.3	6.8			9.4				9.5				16.0
	18.0	8.8	6.4			9.0	6.5			9.2	6.6			18.0
	20.0	8.3	6.1	4.8	4.0	8.5	6.2	4.9	4.1	8.8	6.3	4.9		20.0
	22.0	7.9	5.7	4.5	3.8	8.1	5.9	4.6	3.9	8.3	6.0	4.7	3.9	22.0
	24.0	7.5	5.5	4.3	3.6	7.7	5.6	4.4	3.7	7.7	5.7	4.5	3.7	24.0
	26.0	7.1	5.2	4.1	3.4	7.0	5.4	4.2	3.5	6.9	5.5	4.3	3.5	26.0
	28.0	6.4	5.0	3.9	3.2	6.2	5.1	4.0	3.3	6.1	5.2	4.1	3.3	28.0
	30.0	5.7	4.8	3.8	3.1	5.6	4.9	3.8	3.2	5.5	5.1	3.9	3.2	30.0
	32.0	5.1	4.7	3.7	3.0	5.1	4.8	3.7	3.1	5.0	4.9	3.8	3.1	32.0
	34.0	4.6	4.5	3.5	2.9	4.5	4.6	3.6	3.0	4.4	4.6	3.7	3.0	34.0
	36.0	4.2	4.3	3.4	2.8	4.1	4.3	3.5	2.9	4.0	4.1	3.6	2.9	36.0
	38.0	3.8	4.1	3.3	2.7	3.7	4.0	3.4	2.8	3.6	3.7	3.5	2.8	38.0
	40.0		3.8	3.2	2.6	3.4	3.7	3.3	2.7	3.2	3.3	3.4	2.7	40.0
	42.0		3.5	3.1	2.5		3.4	3.2	2.6	2.9	3.0	3.3	2.6	42.0
	44.0			3.0	2.4			3.1	2.5		2.7	3.1	2.5	44.0
	46.0				2.3				2.4			2.8	2.4	46.0
48.0				2.2				2.3			2.6	2.3	48.0	
50.0												2.2	50.0	
Reeves	1	1	1	1	1	1	1	1	1	1	1	1	Reeves	

Note:

Ratings according to EN13000.

Ratings shown in   are determined by the strength of the boom or other structural components.

Lifting capacities may vary depending on hook used or with/without auxiliary sheave.

Please refer rated chart in operator's cabin.

# LIFTING CAPACITIES



## Fixed Jib Lifting Capacities (Without Main Hook Block) (Jib Offset Angle : 30°)

Counterweight: 31.9 t  
Carbody Weight: 14.4 t

Unit: metric ton

Boom length (m)		42.7				45.7				48.8				Boom length (m)
Jib length (m)		9.1	12.2	15.2	18.3	9.1	12.2	15.2	18.3	9.1	12.2	15.2	18.3	Jib length (m)
Working radius (m)	16.0	9.5				9.5								16.0
	18.0	9.4	6.7			9.5				9.5				18.0
	20.0	8.9	6.4	5.1		9.1	6.5	5.1		9.2	6.6	5.1		20.0
	22.0	8.4	6.1	4.8	4.0	8.4	6.2	4.9	4.0	8.5	6.3	4.9	4.1	22.0
	24.0	7.6	5.8	4.6	3.8	7.6	5.9	4.7	3.8	7.5	6.0	4.7	3.9	24.0
	26.0	6.7	5.6	4.4	3.6	6.6	5.7	4.5	3.7	6.6	5.8	4.5	3.7	26.0
	28.0	6.0	5.4	4.2	3.4	5.9	5.5	4.3	3.5	5.9	5.6	4.3	3.6	28.0
	30.0	5.3	5.2	4.0	3.3	5.3	5.3	4.1	3.3	5.2	5.4	4.1	3.4	30.0
	32.0	4.8	5.0	3.9	3.2	4.8	4.9	4.0	3.2	4.7	4.9	4.0	3.3	32.0
	34.0	4.4	4.5	3.8	3.1	4.3	4.4	3.9	3.1	4.2	4.4	3.9	3.2	34.0
	36.0	3.9	4.1	3.7	3.0	3.9	4.0	3.7	3.0	3.9	3.9	3.8	3.1	36.0
	38.0	3.5	3.7	3.6	2.9	3.5	3.6	3.6	2.9	3.5	3.6	3.7	3.0	38.0
	40.0	3.2	3.3	3.5	2.8	3.2	3.2	3.4	2.8	3.1	3.2	3.4	2.9	40.0
	42.0	2.9	3.0	3.3	2.7	2.9	2.9	3.1	2.7	2.8	2.9	3.0	2.8	42.0
	44.0	2.6	2.7	3.0	2.6	2.6	2.6	2.8	2.7	2.5	2.6	2.7	2.7	44.0
	46.0		2.4	2.7	2.5	2.3	2.4	2.5	2.6	2.2	2.3	2.4	2.6	46.0
	48.0		2.2	2.4	2.4	2.1	2.2	2.2	2.4	2.0	2.0	2.1	2.3	48.0
	50.0			2.2	2.2		2.0	2.0	2.2	1.8	1.8	1.9	2.1	50.0
	52.0				2.0			1.8	2.0		1.6	1.7	1.9	52.0
	54.0				1.8				1.8			1.5	1.7	54.0
56.0								1.6				1.5	56.0	
58.0													58.0	
Reeves	1	1	1	1	1	1	1	1	1	1	1	1	Reeves	

Boom length (m)		51.8			
Jib length (m)		9.1	12.2	15.2	18.3
Working radius (m)	18.0	9.5			
	20.0	9.3	6.6		
	22.0	8.5	6.4	5.0	
	24.0	7.5	6.1	4.8	3.9
	26.0	6.6	5.9	4.6	3.8
	28.0	5.9	5.7	4.4	3.6
	30.0	5.2	5.4	4.2	3.5
	32.0	4.7	4.8	4.1	3.4
	34.0	4.2	4.3	4.0	3.3
	36.0	3.7	3.8	3.9	3.2
	38.0	3.3	3.5	3.6	3.1
	40.0	3.0	3.2	3.3	3.0
	42.0	2.7	2.9	3.0	2.9
	44.0	2.4	2.6	2.7	2.6
	46.0	2.2	2.4	2.4	2.4
	48.0	1.9	2.1	2.1	2.2
50.0	1.7	1.9	1.9	2.0	
52.0	1.5	1.7	1.7	1.7	
54.0		1.5	1.5	1.5	
56.0				1.4	
Reeves	1	1	1	1	

Note:

Ratings according to EN13000.

Ratings shown in  are determined by the strength of the boom or other structural components.

Lifting capacities may vary depending on hook used or with/without auxiliary sheave.

Please refer rated chart in operator's cabin.



# SUPPLEMENTAL DATA FOR CLAMSHELL RATING CHART

- Operating radius is the horizontal distance from centerline of rotation to a vertical line through the center of gravity of the load.
- The weight of bucket, slings and all other load handling accessories shall be considered part of the lifted load.
- Ratings shown are based on freely suspended loads and make no allowance for such factors as wind effect on lifted load, ground conditions, out-of-level, operating speeds or any other condition that could be detrimental to the safe operation of this equipment. The operator, therefore, has the responsibility to judge the existing conditions and reduce lifted loads and operating speeds accordingly.
- Rated loads do not exceed 66 % of minimum tipping loads.
- Ratings are for the operation on a firm and level surface, up to 1 % gradient.
- At radii and boom lengths where no ratings are shown on chart, operation is not intended nor approved.
- Boom inserts and guy lines must be arranged as shown in the "operator's manual".
- Boom hoist reeving is 12 parts of line.
- Gantry must be in raised position for all conditions.
- Boom backstops are required for all boom lengths.
- The boom should be erected over the front of the crawlers, not laterally.
- Crawlers must be fully extended for all crane operations.

## (Clamshell bucket lifting)

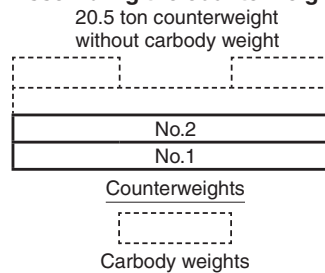
- The total load that can be lifted is the value of the weight of bucket, slings, and all other load handling accessories deducted from main boom ratings shown.
- The weight of bucket and materials must not exceed rated load.
- Optimum bucket should be required according to material.  $\text{Bucket capacity (m}^3\text{) } \times \text{ specified gravity of material (ton/m}^3\text{) } + \text{ bucket weight (ton) } = \text{rated load.}$
- Bucket weight must also be decreased according to operating cycle and bucket lowering height.
- Rated loads are determined by stability and boom strength. During simultaneous operations of boom and swing, rapid acceleration or deceleration must be avoided.
- Do not attempt to cast the bucket while swinging or diagonal draw-cutting.

## <Reference Information>

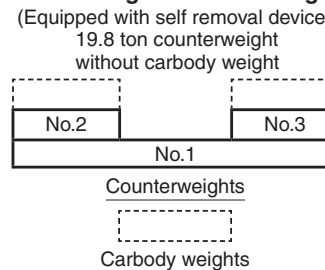
### Main hoist loads

No. of Parts of Line	1
Maximum Loads (kN)	98
Maximum Loads (t)	10.0

### Assembling the counterweight (Standard type)



### Assembling the counterweight (Optional type)



- Although the total weight of the counterweight is different between machine equipped with self-removal device and machine not equipped with self-removal device, the lifting capacity is the same.

Operation of this equipment in excess of rated loads  
or disregard of instruction voids the warranty.

# LIFTING CAPACITIES



## Clamshell Rating Charts Crane Boom Capacities

Counterweight: 20.5 t  
Without Carbody Weight

Unit: metric ton

Load radius (m) \ Boom length (m)	12.2	15.2	18.3	21.3	24.4				Boom length (m) \ Load radius (m)
5.0	10.0								5.0
6.0	10.0	10.0							6.0
7.0	10.0	10.0	10.0						7.0
8.0	10.0	10.0	10.0	9.5					8.0
9.0	10.0	10.0	10.0	9.5	8.7				9.0
10.0	9.8	9.7	9.6	9.5	8.7				10.0
11.0	9.1	9.0	8.9	8.8	8.7				11.0
12.0		8.3	8.2	8.1	8.0				12.0
13.0		7.7	7.6	7.5	7.4				13.0
14.0		7.1	7.0	6.9	6.8				14.0
15.0			6.5	6.4	6.3				15.0
16.0			6.1	6.0	5.9				16.0
17.0				5.7	5.6				17.0
18.0				5.4	5.3				18.0
19.0				5.2	5.1				19.0
20.0					4.9				20.0
21.0					4.7				21.0
Reeves	1	1	1	1	1				Reeves

Note:

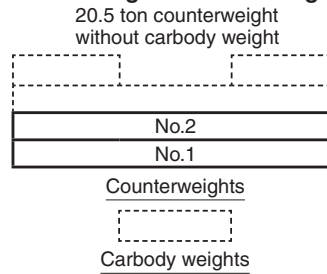
Please refer rated chart in operator's cabin.

# SUPPLEMENTAL DATA FOR REDUCED WEIGHTS RATING CHART

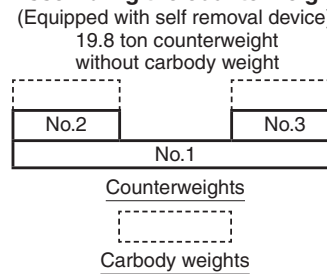
- Ratings are calculated to comply with EN13000, ISO 4305 and include factors based on a 4 degree tipping angle.
  - Operating radius is the horizontal distance from centerline of rotation to a vertical line through the center of gravity of the load.
  - The weight of hook block, slings and all other load handling accessories shall be considered part of the lifted load.
  - Ratings shown are based on freely suspended loads and make no allowance for such factors as wind effect on lifted load, ground conditions, out-of-level, operating speeds or any other condition that could be detrimental to the safe operation of this equipment. The operator, therefore, has the responsibility to judge the existing conditions and reduce lifted loads and operating speeds accordingly.
  - Ratings are for the operation on a firm and level surface, up to 1 % gradient.
  - At radii and boom lengths where no ratings are shown on chart, operation is not intended nor approved.
  - Boom inserts and guy lines must be arranged as shown in the "operator's manual".
  - Boom hoist reeving is 12 parts of line.
  - Gantry must be in raised position for all conditions.
  - Boom backstops are required for all boom lengths.
  - The boom should be erected over the front of the crawlers, not laterally.
  - Ratings inside of boxes  are based on structural competence.
  - The minimum rated load is 1.4 t.
  - Crawlers must be fully extended for all crane operations.
  - Ratings shown are based on allowable wind speed of 9.8 m/s or less.  
The wind speed mentioned here means the instantaneous wind speed.
  - Ratings shown are based on allowable travel speed of 0.1 m/s or less.
- (Crane boom lifting)**
- The total load that can be lifted is the value of the weight of hook block, slings, and all other load handling accessories deducted from main boom ratings shown.

Counterweight	Carbody weight	Boom length	
		Without aux.	With aux.
20.5 ton	Without	12.2 m ~ 57.9 m	12.2 m ~ 54.9 m
19.8 ton	Without	12.2 m ~ 57.9 m	12.2 m ~ 54.9 m

## Assembling the counterweight (Standard type)



## Assembling the counterweight (Optional type)



- Although the total weight of the counterweight is different between machine equipped with self-removal device and machine not equipped with self-removal device, the lifting capacity is the same.

## <Reference Information>

### Main hoist loads

No. of Parts of Line	1	2	3	4	5
Maximum Loads (kN)	112	224	335	447	559
Maximum Loads (t)	11.4	22.8	34.2	45.6	57.0

No. of Parts of Line	6	7*	8*
Maximum Loads (kN)	671	779	883
Maximum Loads (t)	68.4	79.4	90.0

\*Use auxiliary sheave.

### Auxiliary hoist loads

No. of Parts of Line	1
Maximum Loads (kN)	108
Maximum Loads (t)	11.0

Weight of hook block					
Hook Block	90 t	70 t	50 t	35 t	Ball Hook
Weight (t)	1.3	0.9	0.85	0.7	0.3

Operation of this equipment in excess of rated loads or disregard of instruction voids the warranty.

# LIFTING CAPACITIES



## Reduced Weights Rating Charts Crane Boom Lifting Capacities

Counterweight: 20.5 t  
Without Carbody Weight

Unit: metric ton

Load radius (m)	Boom length (m)											Boom length (m)	Load radius (m)	
		12.2	15.2	18.3	21.3	24.4	27.4	30.5	33.5	36.6	39.6			
3.9		81.2	77.3	71.4										3.9
4.0		80.2	74.6	69.0	4.3m/59.0									4.0
4.5		67.1	63.2	59.1	55.8	4.7m/49.9								4.5
5.0		54.8	54.8	51.6	49.0	46.4	5.1m/42.2							5.0
5.5		46.2	46.2	45.8	43.7	41.6	39.7	5.6m/37.1						5.5
6.0		40.0	39.9	39.7	39.4	37.6	36.0	34.5	33.1	6.4m/29.8	6.8m/26.9			6.0
7.0		31.3	31.2	31.1	30.9	30.6	30.3	29.2	28.2	27.1	26.2			7.0
8.0		25.7	25.6	25.4	25.4	25.4	25.3	25.2	24.4	23.6	22.8			8.0
9.0		21.7	21.6	21.4	21.4	21.4	21.4	21.3	21.3	20.8	20.1			9.0
10.0		18.8	18.6	18.5	18.5	18.5	18.5	18.4	18.3	18.2	18.0			10.0
12.0	11.8m/15.0	14.5	14.4	14.4	14.4	14.4	14.3	14.2	14.2	14.0	13.9			12.0
14.0		11.9	11.7	11.7	11.7	11.7	11.6	11.5	11.4	11.3	11.2			14.0
16.0		14.4m/11.5	9.8	9.8	9.8	9.8	9.7	9.6	9.5	9.4	9.3			16.0
18.0			17.0m/9.0	8.4	8.3	8.3	8.3	8.1	8.1	7.9	7.8			18.0
20.0				19.6m/7.6	7.2	7.1	7.0	6.9	6.9	6.8	6.7			20.0
22.0					6.4	6.3	6.1	6.1	5.9	5.8				22.0
24.0					22.3m/6.3	5.6	5.4	5.3	5.2	5.1				24.0
26.0						24.9m/5.3	4.8	4.8	4.6	4.5				26.0
28.0							27.6m/4.4	4.3	4.1	4.0				28.0
30.0								3.8	3.7	3.6				30.0
32.0								30.2m/3.8	3.3	3.2				32.0
34.0									32.9m/3.2	2.9				34.0
36.0										35.5m/2.7				36.0
38.0														38.0
40.0														40.0
44.0														44.0
Reeves		8	8	8	6	5	4	4	3	3	3			Reeves

Load radius (m)	Boom length (m)											Boom length (m)	Load radius (m)	
		42.7	45.7	48.8	51.8	54.9	57.9							
4.5														4.5
5.0														5.0
5.5														5.5
6.0														6.0
7.0	7.3m/24.1	7.7m/22.2												7.0
8.0	22.0	21.4	8.1m/19.8	8.5m/17.2										8.0
9.0	19.5	18.9	18.3	16.6	14.5	9.4m/12.5								9.0
10.0	17.4	16.9	16.4	15.5	13.5	11.9								10.0
12.0	13.8	13.7	13.5	13.1	11.9	10.4								12.0
14.0	11.1	11.1	11.1	11.0	10.6	9.3								14.0
16.0	9.1	9.1	9.1	9.0	8.9	8.3								16.0
18.0	7.7	7.7	7.7	7.6	7.5	7.4								18.0
20.0	6.6	6.6	6.5	6.4	6.3	6.3								20.0
22.0	5.7	5.7	5.6	5.5	5.4	5.4								22.0
24.0	4.9	4.9	4.9	4.8	4.7	4.6								24.0
26.0	4.3	4.3	4.3	4.2	4.1	4.0								26.0
28.0	3.8	3.8	3.8	3.7	3.6	3.5								28.0
30.0	3.4	3.4	3.4	3.3	3.1	3.0								30.0
32.0	3.1	3.1	3.0	2.9	2.7	2.6								32.0
34.0	2.7	2.7	2.6	2.5	2.3	2.3								34.0
36.0	2.4	2.4	2.3	2.2	2.0	1.9								36.0
38.0	2.1	2.1	2.0	1.9	1.7	1.7								38.0
40.0	38.1m/2.1	1.9	1.8	1.6	1.5	1.4								40.0
44.0		40.8m/1.8	43.4m/1.4											44.0
48.0														48.0
52.0														52.0
Reeves		3	2	2	2	2	2							Reeves

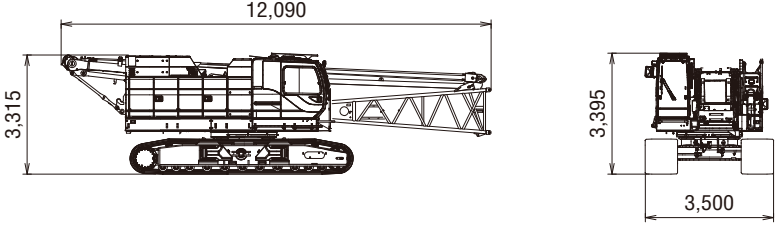
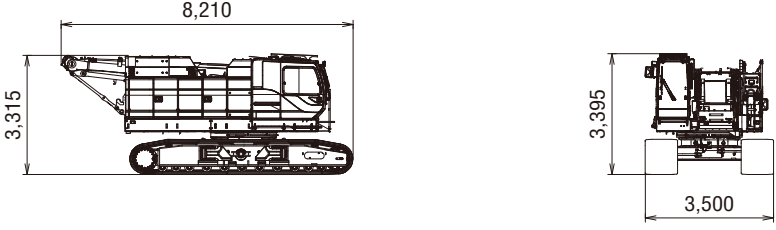
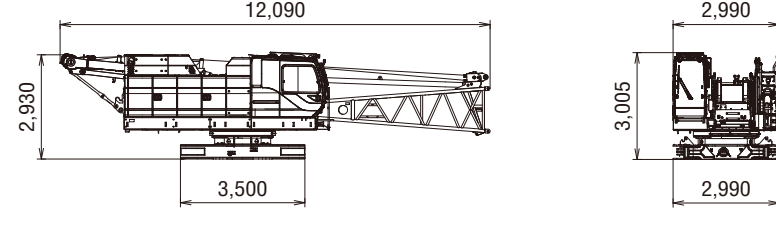
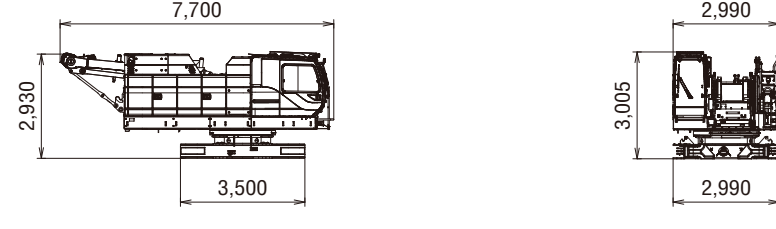
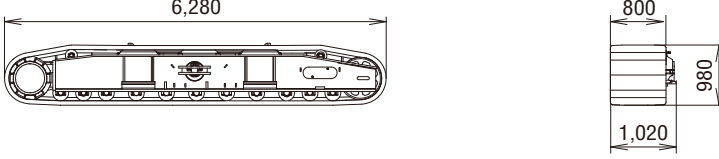
Ratings according to EN13000.

Ratings shown in   are determined by the strength of the boom or other structural components.

Lifting capacities may vary depending on hook used or with/without auxiliary sheave.

Please refer rated chart in operator's cabin.

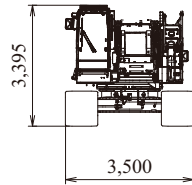
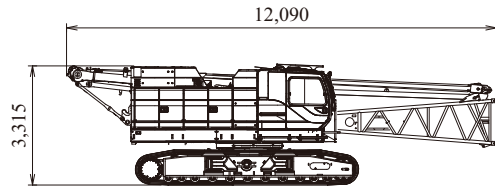
# TRANSPORTATION PLAN

Name	Dimension	Weight (kg)
<b>Base Machine</b> <ul style="list-style-type: none"> <li>• Boom base</li> <li>• Gantry</li> <li>• Crawler</li> <li>• Wire rope (Front / rear / boom hoist)</li> </ul>		41,350
<b>Base Machine</b> <ul style="list-style-type: none"> <li>• Gantry</li> <li>• Crawler</li> <li>• Wire rope (Front / rear / boom hoist)</li> </ul>		39,290
<b>Base Machine</b> <ul style="list-style-type: none"> <li>• Boom base</li> <li>• Gantry</li> <li>• Wire rope (Front / rear / boom hoist)</li> <li>• Without crawler</li> </ul>		27,070
<b>Base Machine</b> <ul style="list-style-type: none"> <li>• Gantry</li> <li>• Wire rope (Front / rear / boom hoist)</li> <li>• Without crawler</li> </ul>		25,010
Crawler		7,130

# PARTS AND ATTACHMENTS

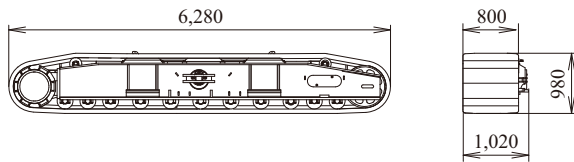
## Base Machine

Boom base, Gantry, Crawler, Wire rope (Front/rear/boom hoist)  
Weight: 41,350 kg Width: 3,500 mm



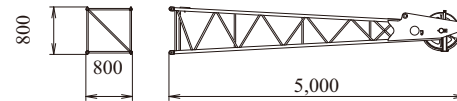
## Crawler

Weight: 7,130 kg



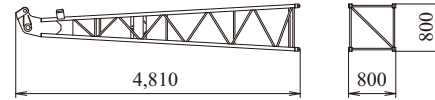
## Upper Jib

Weight: 280 kg



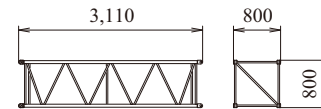
## Lower Jib

Weight: 200 kg



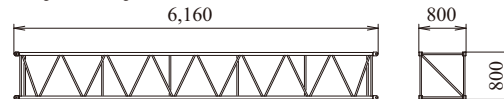
## 3.0 m Jib Insert

Weight: 100 kg



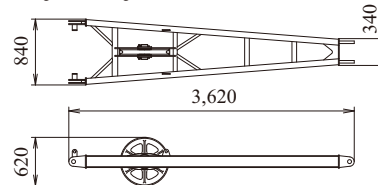
## 6.1 m Jib Insert

Weight: 180 kg



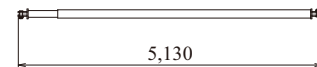
## Strut

Weight: 250 kg



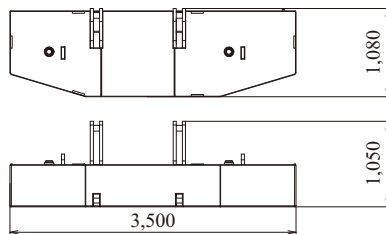
## Crane Backstop

Weight: 270 kg



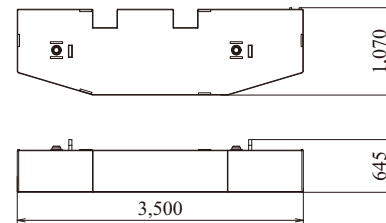
## Counterweight No.1

Weight: 10,540 kg



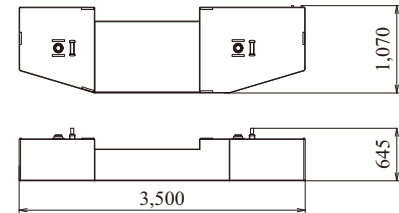
## Counterweight No.2

Weight: 9,930 kg



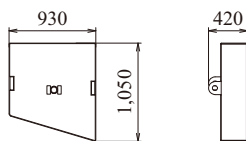
## Counterweight No.3

Weight: 8,250 kg



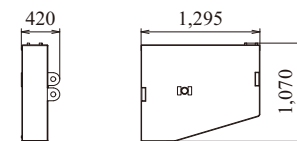
## Counterweight No.4 (L)

Weight: 1,280 kg



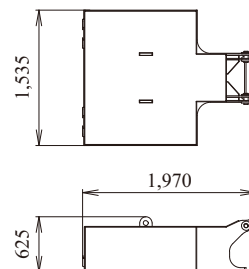
## Counterweight No.4 (R)

Weight: 1,900 kg

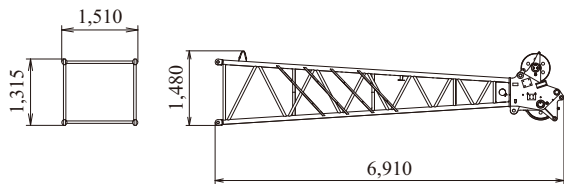


## Carbody Weight

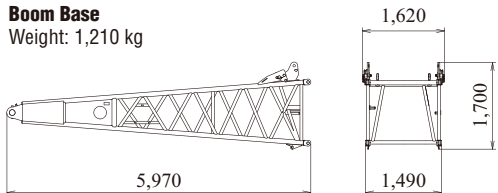
Weight: 7,200 kg



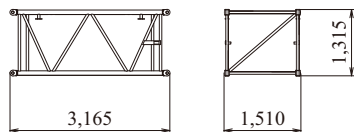
**Boom Tip**  
Weight: 1,205 kg



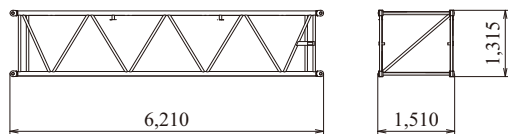
**Boom Base**  
Weight: 1,210 kg



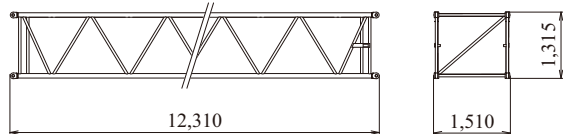
**3.0 m Boom Insert**  
Weight: 310 kg



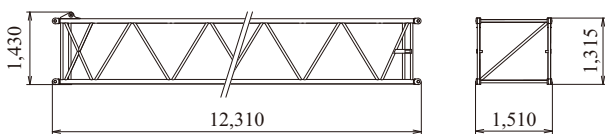
**6.1 m Boom Insert**  
Weight: 525 kg



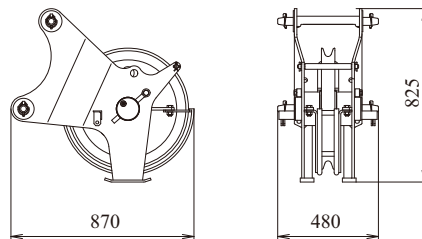
**12.2 m Insert Boom**  
Weight: 965 kg



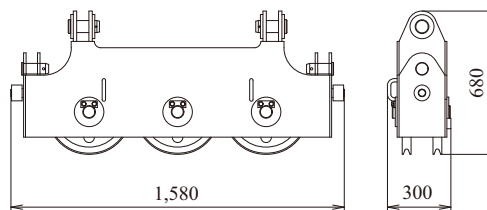
**12.2 m Boom Insert (with lug)**  
Weight: 980 kg



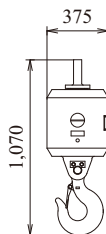
**Auxiliary Sheave**  
Weight: 195 kg



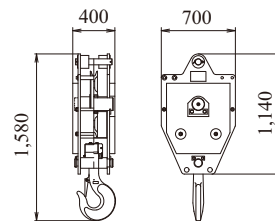
**Upper Spreader**  
Weight: 280 kg



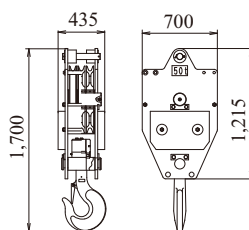
**Ball Hook**  
Weight: 300 kg



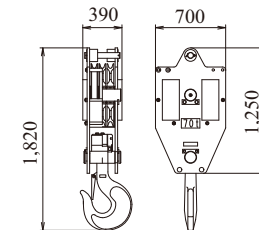
**35 t Hook**  
Weight: 700 kg



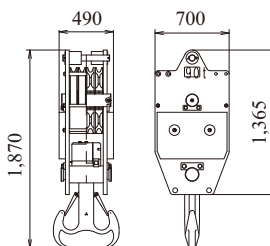
**50 t Hook**  
Weight: 850 kg



**70 t Hook**  
Weight: 900 kg



**90 t Hook**  
Weight: 1,300 kg



Note: This catalog may contain photographs of machines with specifications, attachments and optional equipment not certified for operation in your country. Please consult KOBELCO for those items you may require. Due to our policy of continual product improvements all designs and specifications are subject to change without advance notice.

Copyright by KOBELCO CONSTRUCTION MACHINERY CO., LTD. No part of this catalog may be reproduced in any manner without notice.



## **KOBELCO CONSTRUCTION MACHINERY CO., LTD.**

Inquiries To :

5-15, Kitashinagawa 5-chome, Shinagawa-ku, Tokyo 141-8626 JAPAN

Tel: +81-3-5789-2121 Fax: +81-3-5789-3372

URL: <https://www.kobelcocm-global.com>